



A Division of Accuweigh Pty Ltd

Advanced Australasian Software

PC-BASED

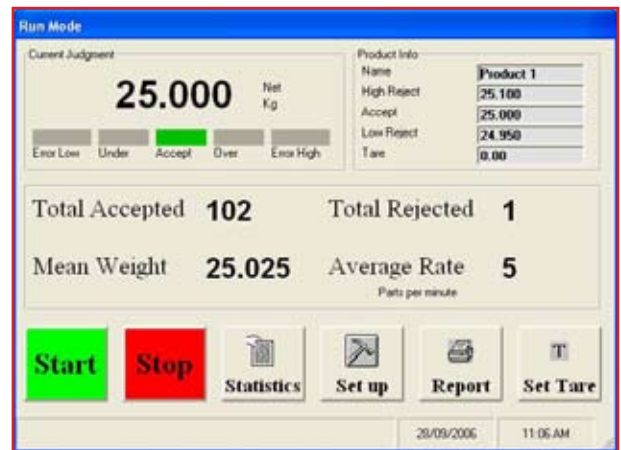
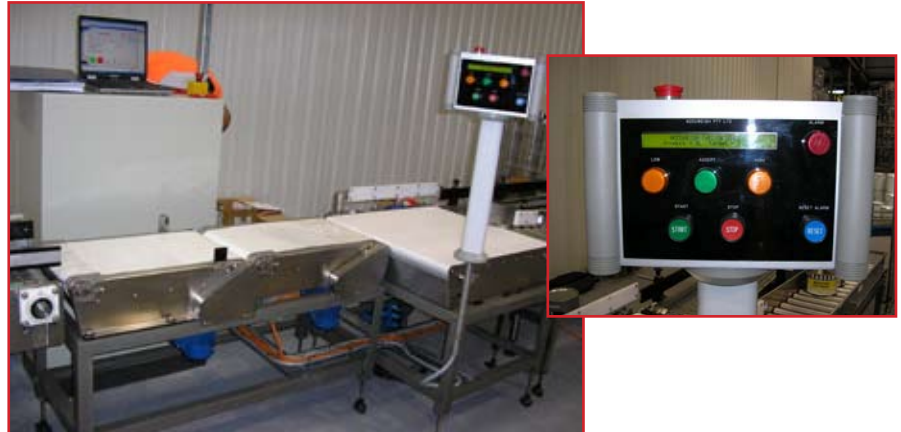
CHECK WEIGHERS

APPLICATIONS

- All Packaging Lines
- Food Process Lines

FEATURES

- Up to 80 Pieces per Minute
- Up to 2000 Product
- Up to 10 Defaults
- Histogram
- Live Graph
- Communication:
 - TCP IP
 - RS232
 - TTL
- Report by:
 - Rejected Item
 - Under Weight
 - Over Weight
 - Accept
 - Date
 - Product
- Touch Screen
- Photo Eye Input
- Digital Output:
 - Under
 - Over
 - Auxiliary
 - Metal



Batch name : 11:35:11 _06/12/2004		Page 1 of 1
U	A	0
24.000	25.000	26.000
Product name: 15 L		
Status	Readings	Time
U	5.5	11:35:42
	15	11:35:53
	15.01	11:36:03
	15	11:36:13
	15.01	11:36:24
	15.02	11:36:35
	15.01	11:36:46
	15.01	11:36:57
	14.99	11:37:09
U	1.25	11:37:26
Ave :	12.501	
Total No :	10	
No of O : 0%	0	
No of U :20%	2	
No of Pass per min	0	
Standard Dev	5.002897938	

AASoftware

A Division of Accuweigh Pty Ltd

Head Office:
7 Endeavour Drive,
Port Adelaide, SA, 5015

Ph: (08) 8447 5011
Fax: (08) 8447 5022
Email: sales@aasoftware.com.au

Nationwide Sales and Service

www.aasoftware.com.au